

Influence of different urea-based fertilizer granules in soil on root system development, soil chemistry and plant growth under controlled conditions

S. R. G. A. Blaser¹, E. Thiel², H.-J. Vogel^{1,3}, D. Vetterlein^{1,3}

¹ Helmholtz Centre for Environmental Research – UFZ, Department of Soil Physics, Theodor-Lieser-Straße 4, 06120 Halle (Saale)

² SKW Stickstoffwerke Piesteritz GmbH, Agricultural Application Research, Am Wieseneck 7, 04451 Cunnersdorf

³ Martin-Luther-University Halle-Wittenberg, Institute of agricultural and nutritional sciences, Von-Seckendorff-Platz 3, 06120 Halle (Saale)



1 Introduction and Background

- Urea is the most widely used nitrogen (N) fertilizer worldwide and undergoes rapid hydrolyzation in soil, after which the ammonia is oxidized to nitrate.
- Due to the use of nitrification inhibitors, the importance of NH_4^+ as N source has increased.
- Nitrogen is heterogeneously distributed in the soil matrix and fertilizer application can create nutrient patches, e.g. by the usage of urea granules.
- Two general ways of root response seem to be common including systemic repression of lateral root (LR) growth by high N status of the plant and local stimulation/inhibition of LR growth by availability of NO_3^- or NH_4^+ [1-8].
- These responses are controlled by external & internal signals, associated with local & systemic signaling pathways in the plant [2, 4, 6, 9, 10].

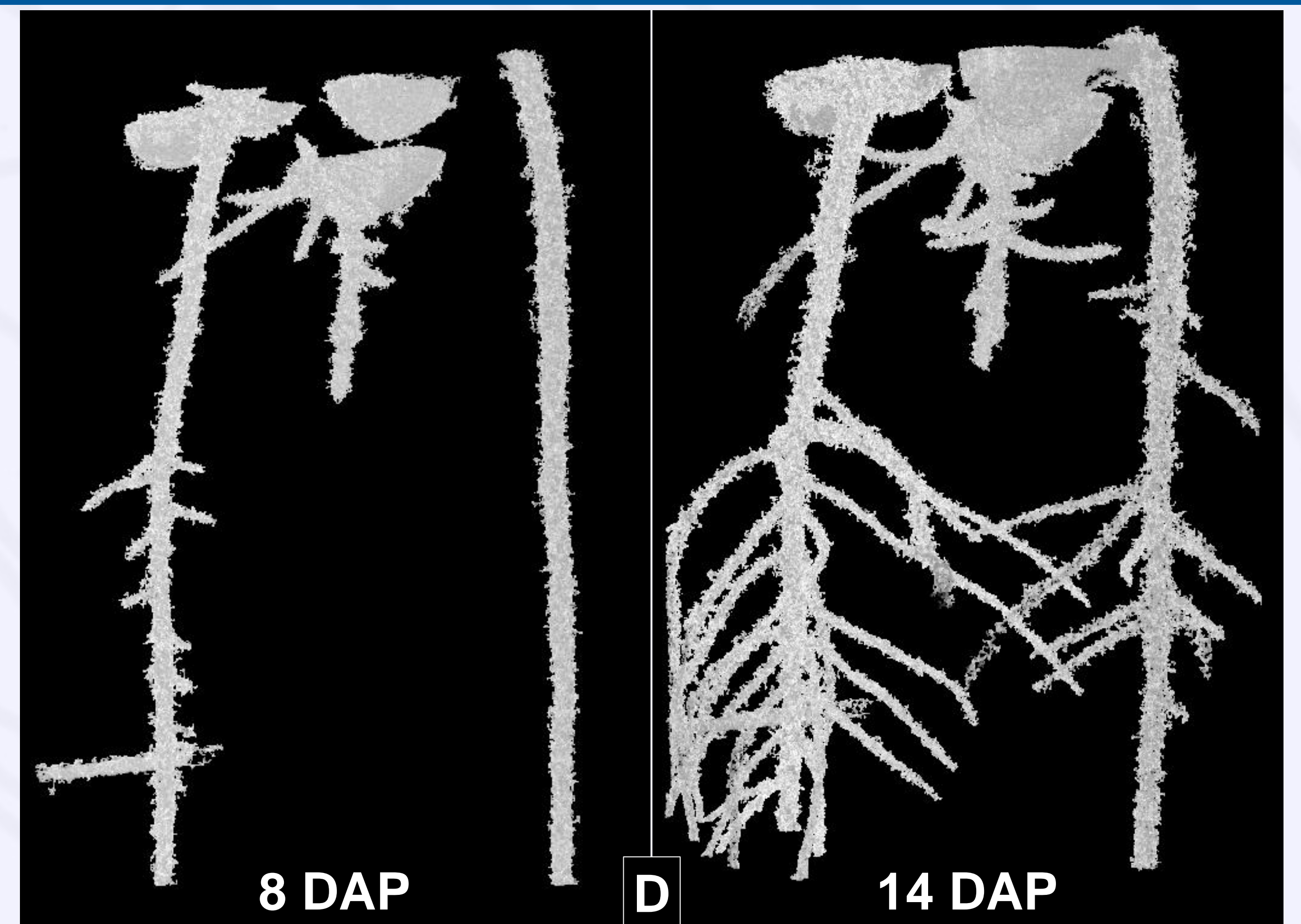
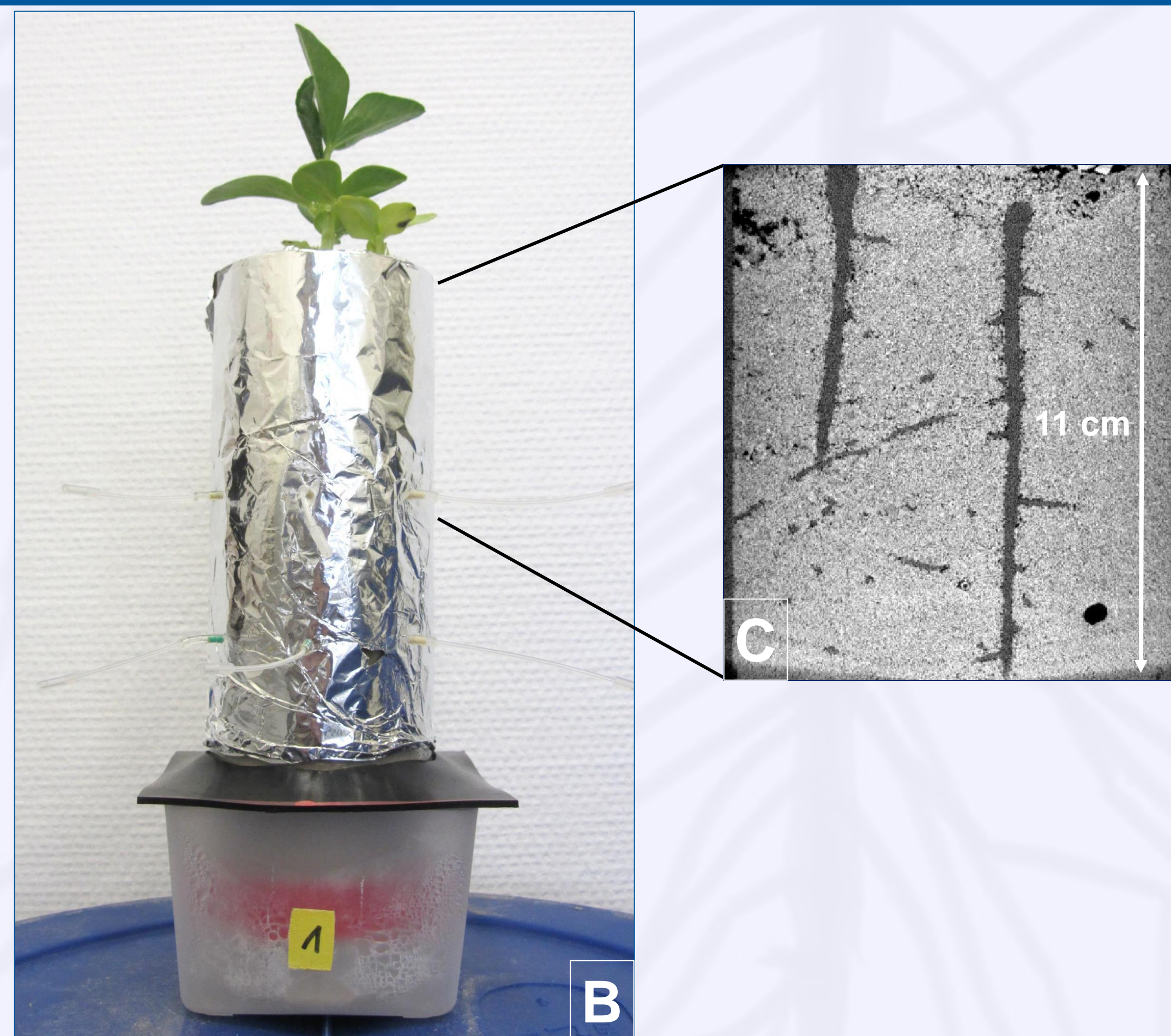
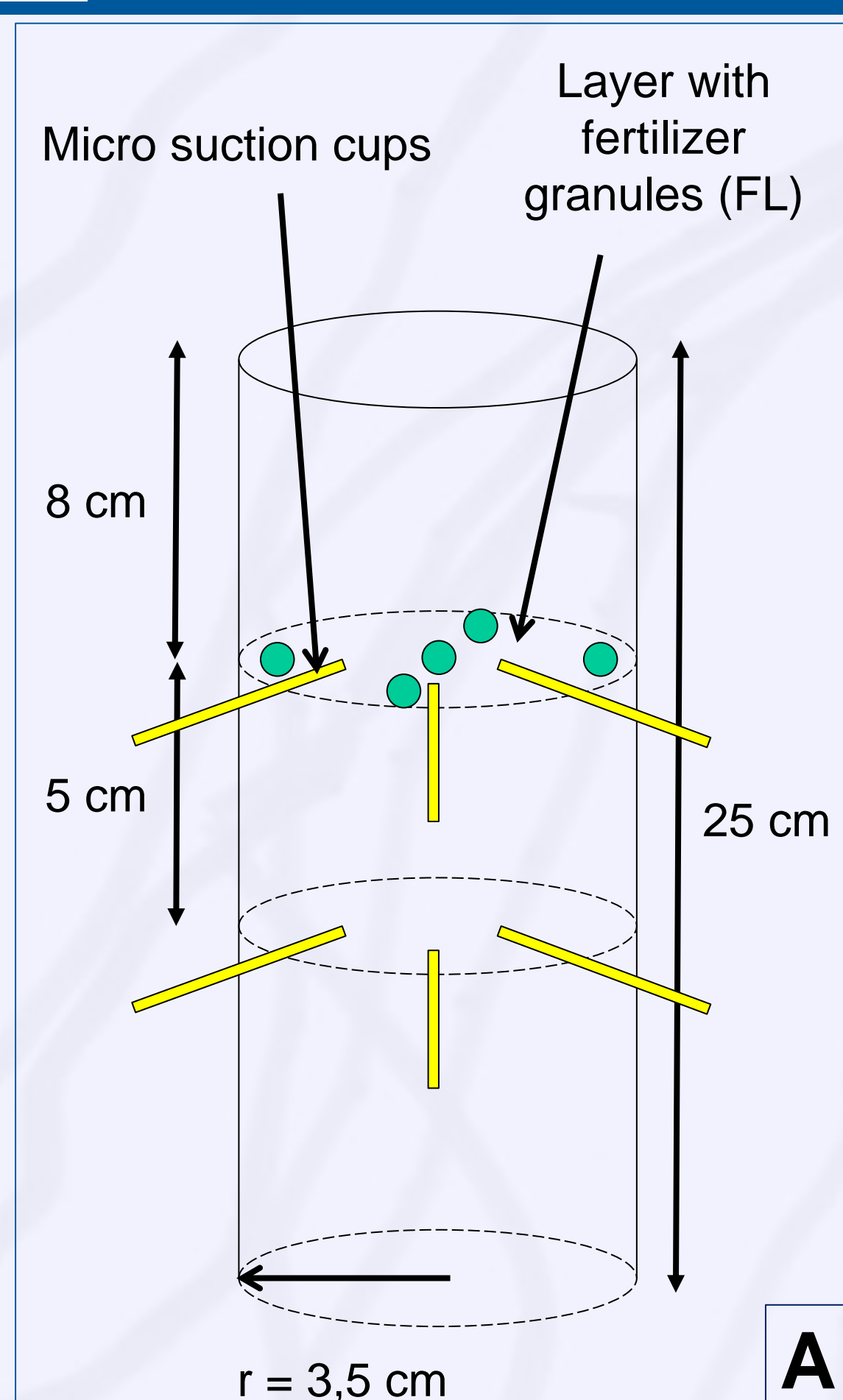
2 Aims

- Combination of *in situ* analysis of root system development in the soil with soil chemical studies (pH & N-dynamics in soil solution).
- Increase understanding of temporal and spatial dynamics of root response to non-uniform supply of N *in situ*.

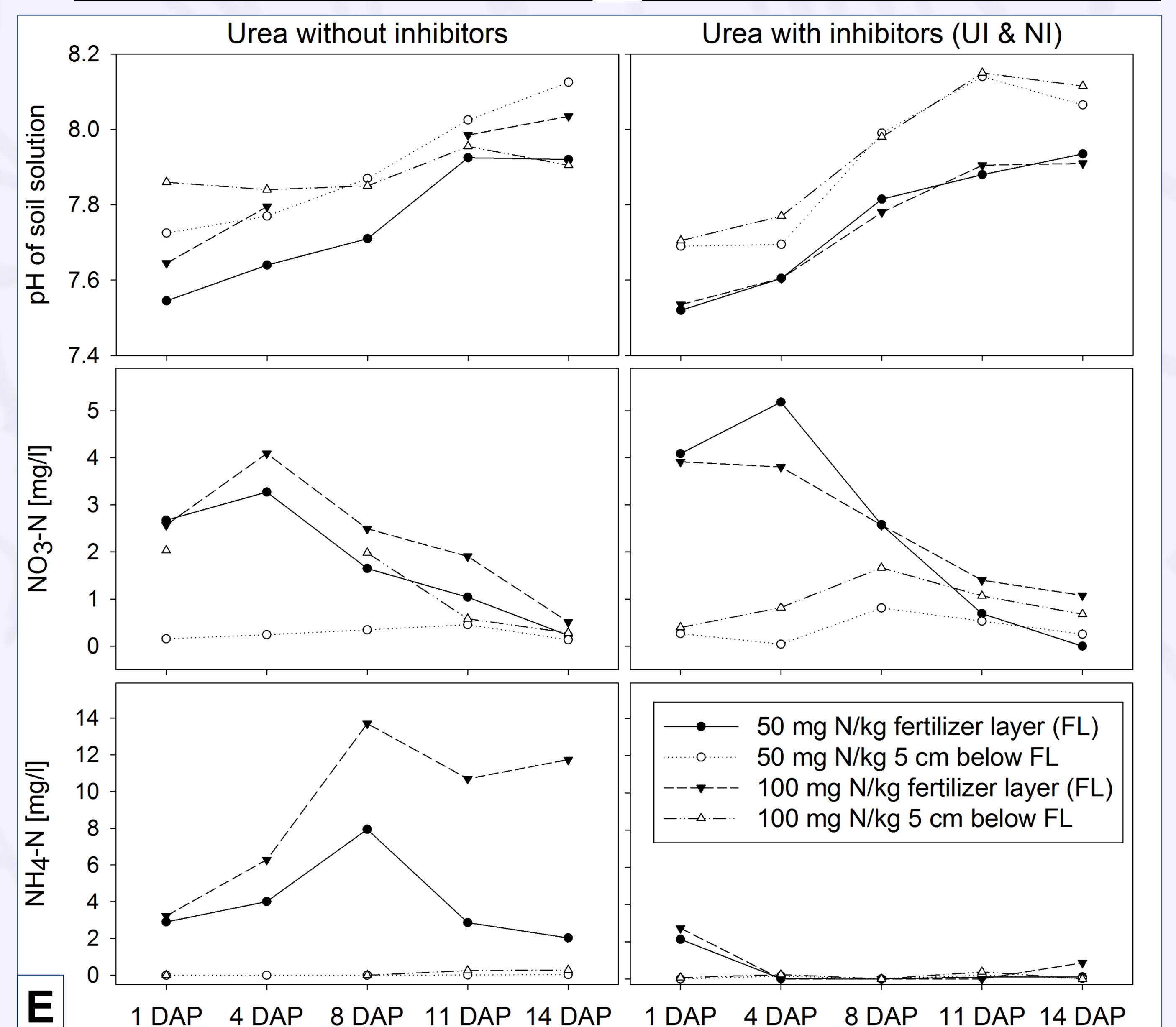
3 Methods

- Use of urea with and without inhibitors for urease (UI) and nitrification (NI) to create different N regimes ($\text{NO}_3^- / \text{NH}_4^+$).
- Visualization and characterization of root system development *in situ* by X-ray CT [11, 12].
- Monitoring of soil solution composition with micro suction cups.
- Control of root parameters with WinRHIZO (Regent Instruments).

4 Preliminary results of new methodological approach (Blaser *et al.*; unpublished data)



- A) Sketch of the sample setup with granulated urea-based fertilizer (green) and micro suction cups (yellow).
- B) Sample setup with 3 plants of *Vicia faba*. Samples are watered from below and aluminum foil prevents algae growth.
- C) Raw image from the upper part of a sample obtained by X-ray CT.
- D) Exemplary results of X-ray CT: Roots of *Vicia faba* obtained by X-ray CT and segmented with a 'region growing' algorithm 8 and 14 days after planting (DAP).
- E) Results of soil chemical analysis: Changes of pH, NO_3^- -N and NH_4^+ -N in the soil solution of samples with N fertilizer in form of urea without inhibitors on the left and of urea with inhibitors (UI & NI) on the right.



5 Conclusions

- Pot size, growth conditions, X-ray CT scanning parameters and micro suction cup sampling intervals are now optimized to enable visualization of all roots, including laterals.
- Hence lateral root formation can now be analyzed with sufficient temporal resolution in the context of changing N-forms and quantities in soil solution.

REFERENCES:

- [1] Hodge (2004) *New Phytol.*, 162: 9-24. [4] Zhang *et al.* (1999) *Proc. Natl. Acad. Sci. USA*, 96: 6529-6534. [7] Linkohr *et al.* (2002) *The Plant J.*, 29: 751-760. [10] Crawford (1995) *Plant Cell*, 7: 859-868.
- [2] Nacry *et al.* (2013) *Plant Soil*, 370: 1-29. [5] Lima *et al.* (2010) *Plant Cell*, 22: 3621-3633. [8] Walch-Liu *et al.* (2006) *Ann. Bot.*, 97: 875-881. [11] Carminati *et al.* (2013) *Plant Soil*, 367: 651-661.
- [3] Drew (1975) *New Phytol.*, 75: 479-490. [6] Mohd-Radzman *et al.* (2013) *Front. Pl. Sci.*, 4: 1-7. [9] Forde (2002) *Ann. Rev. Plant Biol.*, 53: 203-224. [12] Koebernick *et al.* (2013) *VZJ*, 13; doi:10.2136/vzj2014.03.0024.